



GRANDSTREAM
CONNECTING THE WORLD

2023

PRODUCT CATALOG



**Unified Communications
& Networking Solutions**
For Businesses and Vertical Industries

Table of Contents

About Grandstream	3
GRP Series Carrier-Grade IP Phones	4-9
GXP Series Basic, Mid-Range, High-End IP Phones	10-14
GXV Series Android IP Phones	15-18
WP Series Cordless IP Phones	19-21
DP Series DECT Cordless IP Phones	22-25
UCM Series IP PBXs	26-29
Video and Audio Conferencing Solutions	30-33
GDS Series Facility Access Solutions	34-37
Facility Management & Security Solutions	38-41
GWN Series Networking Solutions	42-48
HT Series Analog Telephone Adapters	49-52
GXW Series VoIP Gateways	53-55
Grandstream Device Management System	56
GHP Series Compact Hotel Phones	57-59

About Grandstream



Overview

Grandstream has been connecting the world since 2002 with unified communications and networking solutions that allow businesses to be more productive than ever before. Our award-winning solutions serve the small-to-medium business, service provider and enterprise markets and have been recognized throughout the world for their quality, reliability and innovation. Grandstream solutions are used in over 150 countries because they lower communication costs, increase security protection and enhance productivity.

Corporate Structure

Privately held with over 500 employees worldwide and profitable with strong 2-digit compound annual growth rate in sales since 2002.

Mission Statement

We believe in connecting the world. We believe every business, large or small, should have the tools to communicate from anywhere on any device, and we design products that make this belief a reality.

Competitive Advantages

- Comprehensive portfolio of UC, VoIP, networking & facility management solutions - build a full solution all under the Grandstream brand
- One of the original SIP manufacturers - unrivaled expertise, quality and reliability as a result
- Open-source, zero-configuration plug-and-play technology for easy deployment and broad interoperability with SIP products and services
- State-of-the-art voice and video algorithms for crystal clear audio and video communications

Corporate Offices

1. Boston, MA (HQ), USA
2. Dallas, TX, USA
3. Los Angeles, CA, USA
4. Valencia, Venezuela*
5. Casablanca, Morocco
6. Shenzhen, China*
7. Hangzhou, China*
8. Selangor, Malaysia*
9. Madrid, Spain*

*offices of Grandstream's local partner companies which are business entities not affiliated with Grandstream Networks, Inc.

Awards Recognition



Product Portfolio



Contacts

Sales

sales_northamerica@grandstream.com
sales_latinamerica@grandstream.com
sales_europe@grandstream.com
sales_asia@grandstream.com

Support

<https://helpdesk.grandstream.com>
partnerconnect.grandstream.com

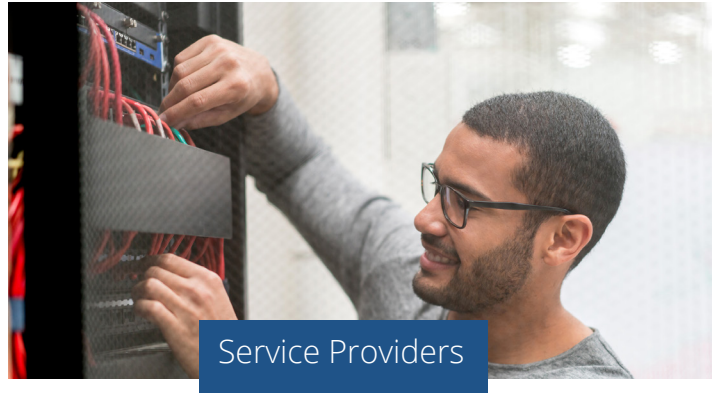


GRP Series Carrier-Grade IP Phones



The GRP2600 Series are carrier-grade IP phones designed for mass deployment. This series of next-generation IP phones features a sleek new design, a reimagined user experience, unified firmware and powerful feature options. Designed for enterprises, service providers and other high-volume markets, the GRP Series offers a powerful, easy-to-use and easy-to-deploy voice platform with next-gen features for high-end users.

Common Deployments



Key Features



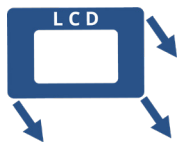
Integrated dual-band Wi-Fi



Built-in Bluetooth for headsets, data exchange & more



A variety of digital multi-purpose keys



Customizable faceplates



Secure boot, dual firmware, encrypted data storage



GDMS

Cloud management with GDMS

Made for Easy Management and Mass Deployment



The GRP Series was designed for mass deployments. It provides zero touch provisioning and easy cloud management with GDMS, offer unified firmware across the entire line, and feature swappable faceplates for easy logo customization. By adding a suite of next-gen features, the GRP Series is ideal for enterprises, service providers and other large deployments.



GRP2670 - 12-Line Professional IP Phone

12 lines, 6 SIP accounts
7-inch LCD color touch screen
Dual switched auto-sensing 10/100/1000 Mbps Gigabit Ethernet/ integrated PoE
Integrated Bluetooth
Full duplex speakerphone with HD audio
Noise shield technology to minimize background noise
5-way audio conferencing
Swappable faceplate to allow for easy logo customization
Integrated dual-band Wi-Fi 802.11 a/b/g/n/ac (2.4Ghz & 5Ghz)
Zero-touch provisioning using Grandstream Device Management System



GRP2650 - 14-Line Professional IP Phone

14 lines, 6 SIP accounts
5-inch color LCD
Dual switched auto-sensing 10/100/1000 Mbps Gigabit Ethernet/ integrated PoE
Integrated Bluetooth
Full duplex speakerphone with HD audio
Noise shield technology to minimize background noise
5-way audio conferencing
Swappable faceplate to allow for easy logo customization
Integrated dual-band Wi-Fi 802.11 a/b/g/n/ac (2.4Ghz & 5Ghz)
Zero-touch provisioning using Grandstream Device Management System



GRP2636 - 6-Line Professional IP Phone

6 lines, 6 SIP accounts
Dual switched auto-sensing 10/100/1000 Mbps Gigabit Ethernet / Integrated PoE
Integrated Bluetooth
24 built-in BLF keys
Full-duplex speakerphone with HD audio
Noise shield technology to minimize background noise
5-way audio conferencing
Swappable faceplate
Integrated dual-band Wi-Fi 802.11 a/b/g/n/ac (2.4Ghz & 5Ghz)
RJ9 headset jack allowing EHS and integrated USB headset support
Integrated Bluetooth
Zero touch provisioning using Grandstream Device Management System (GDMS)



GRP2634 - 8-Line Professional IP Phone

8 lines, 4 SIP accounts
Dual switched auto-sensing 10/100/1000 Mbps Gigabit Ethernet / Integrated PoE
Integrated Bluetooth
10 built-in BLF keys
Full-duplex speakerphone with HD audio
Noise shield technology to minimize background noise
5-way audio conferencing
Swappable faceplate
Integrated dual-band Wi-Fi 802.11 a/b/g/n/ac (2.4Ghz & 5Ghz)
RJ9 headset jack allowing EHS and integrated USB headset support
Integrated Bluetooth
Zero touch provisioning using Grandstream Device Management System (GDMS)



GRP2624 - 8-Line Professional IP Phone

8 lines, 4 SIP accounts
Dual switched auto-sensing 10/100/1000 Mbps Gigabit Ethernet / Integrated PoE
Integrated Bluetooth
Full-duplex speakerphone with HD audio
Noise shield technology to minimize background noise
5-way audio conferencing
Swappable faceplate to allow for easy logo customization
Integrated dual-band Wi-Fi 802.11 a/b/g/n/ac (2.4Ghz & 5Ghz)
Zero touch provisioning using Grandstream Device Management System (GDMS)



GRP2616 - 6-line Professional IP Phone



6 SIP accounts, 6 lines
48 built-in digital BLF keys
Dual LCDs (4.3 inch, 480x272 color LCD and 2.4 inch, 240x320 second screen)
Secure boot, dual firmware images, and encrypted data storage
Integrated dual-band 802.11 a/b/g/n Wi-Fi
Dual switched auto-sensing Gigabit ports with integrated PoE
Swappable faceplates to allow for easy logo customization
Integrated Bluetooth
Zero touch provisioning using Grandstream Device Management System (GDMS)



GRP2615 - 10-line Professional IP Phone



5 SIP accounts, 10 lines
40 built-in digital BLF keys
4.3 inch color LCD screen
Secure boot, dual firmware images, and encrypted data storage
Integrated dual-band 802.11 a/b/g/n Wi-Fi
Dual switched auto-sensing Gigabit ports with integrated PoE
Swappable faceplates to allow for easy logo customization
Integrated Bluetooth
Zero touch provisioning using Grandstream Device Management System (GDMS)
Supports up to 4 GBX20 Extension Modules for speed-dial access to 160 contacts



GRP2614 - 4-line Professional IP Phone



4 SIP accounts, 4 lines
40 built-in digital BLF keys
Dual LCDs (2.8 inch, 320x402 color LCD and 2.4 inch, 240x320 second screen)
Secure boot, dual firmware images, and encrypted data storage
Integrated dual-band 802.11 a/b/g/n Wi-Fi
Dual switched auto-sensing Gigabit ports with integrated PoE
Swappable faceplates to allow for easy logo customization
Integrated Bluetooth
Zero touch provisioning using Grandstream Device Management System (GDMS)



GRP2613 - 3-line Professional IP Phone

- 3 SIP accounts, 6 line keys
- 24 digital BLF keys
- Secure boot, dual firmware images, and encrypted data storage
- Dual switched auto-sensing Gigabit ports with integrated PoE
- Swappable faceplates to allow for easy logo customization
- Zero touch provisioning using Grandstream Device Management System (GDMS)



GRP2612 (P/W/G) - 2-Line Professional IP Phone

- 2 SIP accounts, 4 line keys
- 2.4 inch color LCD
- 16 built-in digital BLF keys
- Secure boot, dual firmware images, and encrypted data storage
- GRP2612W: Integrated dual-band 802.11 a/b/g/n Wi-Fi
- Dual switched 10/100MB ports on GRP2612P & GRP2612W,
- Dual switched auto-sensing Gigabit ports with integrated PoE (GRP2612G)
- PoE available on GRP2612 & GRP2612W
- Swappable faceplates to allow for easy logo customization
- Zero touch provisioning using Grandstream Device Management System (GDMS)



GBX20 - Extension Module

- Connects to GRP2615 Carrier-Grade IP Phone, GRP 2624 Professional IP Phone and GXV3350 Video IP Phone
- 40 extensions per module with 2 page switch keys (20 per page)
- Daisy chain up to 4 models for a total of 160 extensions
- 4.3 inch (272x480) TFT color LCD
- Local GUI: Multiple line/call appearances



GRP2604 (P) - 3-Line Essential IP Phone

- 3 lines, 6 SIP accounts, up to 3 call appearances
- Zero touch provisioning using Grandstream Device Management System (GDMS)
- Electronic Hook Switch (EHS) support
- 10 built-in BLF keys
- Full-duplex speakerphone with HD audio
- Noise shield technology
- 5-way audio conferencing
- Swappable faceplate to allow for easy logo customization
- Dual switched autosensing 10/100/1000 Mbps Gigabit Ethernet ports with integrated PoE (GRP2604P only)



GRP2603 (P) - 3-Line Essential IP Phone

3 lines, 6 SIP accounts, up to 3 call appearances
Zero touch provisioning using Grandstream Device Management System (GDMS)
Electronic Hook Switch (EHS) support
Full-duplex speakerphone with HD audio
Noise shield technology
5-way audio conferencing
Swappable faceplate to allow for easy logo customization
Dual switched autosensing 10/100/1000 Mbps Gigabit Ethernet ports with integrated PoE (GRP2603P only)



GRP2602 (P/W/G) - 2-Line Essential IP Phone

2 lines, 4 SIP accounts
Zero touch provisioning using Grandstream Device Management System (GDMS)
Electronic Hook Switch (EHS) support
Full-duplex speakerphone with HD audio to maximize audio quality and clarity
Noise shield technology to minimize background noise
Dual switched auto-sensing Gigabit ports with integrated PoE (GRP2612G)
GRP2602P includes built-in PoE
5-way audio conferencing for easy conference calls
Swappable faceplate to allow for easy logo customization
GRP2602W includes built-in dual-band Wi-Fi support



GRP2601 (P) - 2-Line Essential IP Phone

2 SIP accounts, 2 lines
Zero touch provisioning using Grandstream Device Management System (GDMS)
5-way audio conferencing for easy conference calls
Noise shield technology to minimize background noise
Electronic Hook Switch (EHS) support
GRP2601P includes built-in PoE
Secure boot, dual firmware images, and encrypted data storage



GXP Series

Basic, Mid-Range & High-End IP Phones



The GXP Series offers a wide-range of IP phone models to provide the ideal option for every user and need. The GXP1600 Series offers simple-to-use devices for basic requirements, the GXP1700 Series offers mid-range devices that businesses can grow with, and the GXP2100 Series provides high-end devices for those who handle high call volumes.

Common Deployments



SMB



Call Centers



Hospitality



Retail Shops

Key Features



HD audio & full-duplex speakerphones



Built-in Bluetooth for headsets, data exchange & more



A variety of digital BLF keys and EXT modules



Gigabit

Gigabit ports on most models



Built-in PoE on most models



GDMS

Cloud management with GDMS*

* except GXP1600 series

The Ideal Model for Every User



With over 10 different models, the GXP Series has the ideal device for every user and deployment scenario. GXP1600 Series are ideal for basic VoIP needs, the GXP1700 Series offers devices that can grow with a business, and the GXP2100 Series are ideal for users who handle high call volumes and need advanced features.



High-End and Mid-Range IP Phones



GXP2170 - 12-line High-End IP Phone

6 SIP accounts, 12 lines
5-way voice conferencing
48 on-screen digitally customizable BLF/speed-dial keys
4.3 inch (480x272) color-screen LCD
Dual Gigabit ports, integrated PoE
Integrated Bluetooth
Supports up to four GXP2200EXT for BLF/speed-dial access to up to 160 contacts



GXP2160 - 6-line High-End IP Phone

6 SIP accounts, 6 lines
5-way voice conferencing
24 BLF/speed-dial keys
4.3 inch (480x272) color-screen LCD
Dual Gigabit ports, integrated PoE
Integrated Bluetooth



GXP2140 - 4-line High-End IP Phone

4 SIP accounts 4 lines
5-way voice conferencing
4.3 inch (480x272) color-screen LCD
Dual Gigabit ports, integrated PoE
Integrated Bluetooth
Supports up to four GXP2200EXT for BLF/speed-dial access to up to 160 contacts



GXP2135 - 8-line High-End IP Phone

4 SIP accounts, 8 lines
4-way voice conferencing
32 on-screen digitally customizable BLF/speed-dial keys
2.8 inch (320 x 240) color-screen LCD
Dual Gigabit ports, integrated PoE
Integrated Bluetooth



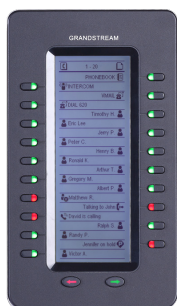
GXP2130 v2 - 3-line High-End IP Phone

3 SIP accounts, 3 lines
4-way voice conferencing
8 BLF/speed-dial keys
2.8 inch (320 x 240) color-screen LCD
Dual Gigabit ports, integrated PoE
Integrated Bluetooth



GXP1780/1782 - 8-line Mid-Range IP Phone

4 SIP accounts, 8 lines
5-way voice conferencing
32 on-screen digitally customizable BLF/speed-dial keys
200 x 80 pixel (3.3") backlit LCD display
Dual Gigabit ports, integrated PoE



GXP2200EXT - Expansion Module

Connects to GXP2170 & GXP2140 IP Phones and GXV3240 Video IP Phone
40 extensions per module with 2 page switch keys
Daisy chain up to 4 models for a total of 160 extensions (20 per page)
128 x 384 graphic LCD display
Local GUI: Multiple line/call appearances



Basic IP Phones



GXP1630 - 3-line Basic IP Phone

3 SIP accounts, 3 lines
4-way voice conferencing
8 dual-colored customizable BLF/speed-dial keys
132x64 (2.98") backlit LCD screen
Dual-switched Gigabit ports, Integrated PoE
HD audio and full-duplex speakerphone



GXP1628 - 2-line Basic IP Phone

2 SIP accounts, 2 lines
3-way voice conferencing
8 dual-colored customizable BLF/speed-dial keys
132 x 48 (2.95") backlit LCD display
Dual-switched Gigabit ports, integrated PoE
HD audio and full-duplex speakerphone



GXP1620/1625 - 2-line Basic IP Phone

2 SIP accounts, 2 lines
3-way voice conferencing
132 x 48 (2.95") backlit LCD display
Dual 10/100Mbps ports, integrated PoE (GXP1625 only)
HD audio and full-duplex speakerphone



GXP1610/1615 - 2-line Basic IP Phone

1 SIP account, 2 call appearances
3-way voice conferencing
132 x 48 (2.95") LCD display
Dual 10/100Mbps ports, Integrated PoE (GXP1615 only)
HD audio and full-duplex speakerphone



GXV Series Android™ IP Video Phones



The GXV Series offers a powerful desktop productivity tool by combining a powerful IP phone with a flexible video collaboration solution and the functionality of an Android tablet. These devices run on the Android operating system, offering full access to the eco-system of Android apps and Google services.

Common Deployments



Enterprises



Facility Managers



Hospitality



Telehealth

Key Features



Runs on Android 11 and 7.x operating system



Built-in cameras & HDMI in/out support up to 1080p HD



Integrated dual-band Wi-Fi 5 and Wi-Fi 6



Built-in Bluetooth for headsets & data exchange



Touch Screens on all models



Cloud management with GDMS

A Powerful & Customizable Productivity Engine



The GXV Series is a one-of-a-kind desktop productivity engine that combines a 16 line IP phone, a multi-platform video collaboration tool and an Android tablet. They can turn any area into a video collaboration space with support for most Android apps and SIP platforms, built-in cameras and HDMI output/input. Also, by utilizing our SDK kit along with Android's API, you can create custom Android apps to run on the GXV series.



GXV3480

16 lines, 16 SIP accounts
Runs on the Android 11 operating system
Built-in Bluetooth 5.0
Built-in 2 megapixel camera for video calling with privacy wheel
Integrated dualband Wi-Fi 6
8" (1280x800) capacitive 10-point touch screen IPS LCD
12-way HD audio conferencing & 3-way 1080p 30fps HD video capability
Quad-core 2.0GHz ARM Cortex-A55 processor, 4GB RAM, and 16GB eMMC Flash



GXV3470

16 lines, 16 SIP accounts
Runs on the Android 11 operating system
Built-in Bluetooth 5.0
Built-in 2 mega-pixel CMOS camera for video calling with privacy shutter
Integrated dualband Wi-Fi 6
7" (1280x800) capacitive 5-point touch screen TFT LCD
10-way audio conferencing & 3-way 720p 30fps HD video conferencing capability
Quad-core 2.0GHz ARM Cortex A55 processor with 2GB RAM and 16GB eMMC Flash



GXV3450

16 lines, 16 SIP accounts
Runs on the Android 11 operating system
Built-in Bluetooth
Built-in 2 mega-pixel CMOS tiltable camera for video calling with privacy shutter
Integrated dualband Wi-Fi
5.0" (1280x720) capacitive 5-point touch screen IPS LCD
10-way audio conferencing & 3-way 720p 30fps HD video conferencing capability
Quad-core 1.8GHz ARM Cortex A55 processor with 2GB RAM and 16GB eMMC Flash
Compatible with GBX20 Extension Module



GXV3380

16 lines, 16 SIP accounts
Runs on the Android 7.x operating system
Built-in Bluetooth
Built-in 2 megapixel camera for video calling with privacy wheel
Integrated dualband Wi-Fi
8" (1280x800) capacitive 10-point touch screen IPS LCD
7-way HD audio conferencing & 3-way 1080p 30fps HD video capability
64-bit quad-core processor, 2GB RAM, and 16GB Flash



GXV3370



16 lines, 16 SIP accounts
Runs on the Android 7.x operating system
Built-in Bluetooth
Built-in megapixel camera for video calling with privacy wheel
Integrated dualband Wi-Fi
7" (1024×600) capacitive 5-point touch screen TFT LCD
7-way audio conferencing & 3-way 720p 30fps HD video conferencing capability
4-core 1.3GHz ARM Cortex A53 processor with 2GB RAM and 8GB eMMC Flash

GXV3350



16 lines, 16 SIP accounts
Runs on the Android 7.x operating system
Built-in Bluetooth
Built-in 1 mega-pixel CMOS tiltable camera for video calling with privacy wheel
Integrated dualband Wi-Fi
5.0" (1280×720) capacitive 5-point touch screen HD TFT LCD
6-way audio conferencing & 3-way 720p 30fps HD video conferencing capability
4-core 1.3GHz ARM Cortex A53 processor with 2GB RAM and 8GB eMMC Flash
Compatible with GBX20 Extension Module



WP Series Cordless Wi-Fi IP Phones



The WP Series enables businesses to create mobile VoIP solutions that utilize immersive Wi-Fi networks to support roaming throughout any facility. Designed to suit a variety of vertical market applications, the WP Series offers powerful features, mobility, door access management and durability to support mobile work environments.

Common Deployments



Retail



Healthcare



Warehouses



Education

Key Features



Dual-band Wi-Fi with advanced roaming support



HD voice & dual MIC with background noise shield



Customizable button for PTT, panic, etc.



Rechargeable batteries



Built-in Bluetooth for headsets & data exchange



Cloud management with GDMS

Mobilize Your VoIP Network



The WP Series provides businesses with the ability build mobile VoIP networks that empower employees to roam around an entire facility while still being able to make and receive calls. These wireless voice networks are easy to install and manage because they utilize immersive Wi-Fi networks, allowing workers to roam throughout any office, warehouse, site, retail store and more. Also, our GWN Series of Wi-Fi APs offer QoS to prioritize voice connections over Wi-Fi.



WP825 - Ruggedized Cordless Wi-Fi IP Phone



2 SIP Accounts, 2 lines
Dual-band Wi-Fi with efficient antenna design and advanced roaming support
Integrated Bluetooth to connect headsets
HD voice & dual MIC design with AEC and Noise Shield Technology
Rechargeable 2000mAh battery, 8-hour talk time, 200-hour standby
Accelerometer and configure button for push-to-talk
Micro USB port and 3.5mm headset jack
Ruggedized Design, Waterproof, Dustproof, drop safe from 2.5m

WP822 - Cordless Wi-Fi IP Phone



2 SIP Accounts, 2 lines
Dual-band Wi-Fi with efficient antenna design and advanced roaming support
Integrated Bluetooth to connect headsets
HD voice & dual MIC design with AEC and Noise Shield Technology
Rechargeable 2000mAh battery, 8-hour talk time, 200-hour standby
Accelerometer and configure button for push-to-talk
Micro USB port and 3.5mm headset jack
Support for wideband audio, HAC supported

WP820 - Cordless Wi-Fi IP Phone



2 SIP accounts, 2 lines
Dual-band Wi-Fi with efficient antenna design and advanced roaming support
Bluetooth for syncing headsets and mobile devices (contacts and call transferring)
HD voice & dual MIC design with AEC and Noise Shield Technology
Rechargeable 1500mAh battery, 7.5 hour talk time, 150-hour standby
Accelerometer and configurable button for push-to-talk
Micro USB port and 3.5mm headset jack
Supports custom Android apps that fit the phone's screen/keys
Battery charger available (GMC08) that can charge up to 8 batteries at a time

WP810 - Basic Cordless Wi-Fi IP Phone



2 SIP accounts, 2 lines
Dual-band Wi-Fi with efficient antenna design and advanced roaming support
HD voice & dual MIC design with AEC and Noise Shield Technology
Rechargeable 1500mAh battery, 6 hour talk time, 120-hour standby
Micro USB port and 3.5mm headset jack
Battery charger available (GMC08) that can charge up to 8 batteries at a time



DP Series DECT Cordless IP Phones



The DP Series offers a variety of DECT handsets and base stations that enable businesses to create affordable cordless VoIP solutions that support office mobility. By featuring robust telephony features, range up to 400 meters outdoors and 50 meters indoors, color-screen LCDs and more, the DP Series allows any business to mobilize their VoIP network.

Common Deployments



SMB



Retail



Warehouses



Doctors Offices

Key Features



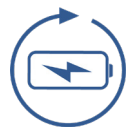
Up to 10 SIP accounts per system & handset



HD audio & full-duplex speakerphones



Push-to-talk and panic button options on most models



Rechargeable batteries



DECT authentication & encryption technology



Cloud management with GDMS

Cordless Solutions for Small & Medium Spaces



The DP Series provides a high-quality and cost-effective cordless solution to mobilize VoIP networks in any small-to-medium space. We offer 3 cordless DECT handsets that pair with either the DP750 or DP752 base station to support a range of up to 400 meters outdoors and 50 meters indoors.

DECT Handsets



DP730 - 400m Range DECT Cordless IP Phone

10 SIP accounts, 10 lines
3-way voice conferencing
Supports a range of up to 400 meters outdoors and 50 meters indoors
Supported by DP752 and DP750 base stations
2.4 inch (240x320) color TFT LCD display
Offers 40-hour talk time and 500-hour standby time
Dedicated push-to-talk button, built-in proximity and accelerometer sensors
HD audio on the speakerphone, handset, and headset jack



DP722 - 350m Range DECT Cordless IP Phone

10 SIP accounts, 10 lines
3-way voice conferencing
Supports a range of up to 350 meters outdoors and 50 meters indoors
Supported by DP752 and DP750 base stations
1.8 inch (128x160) color TFT LCD display
Offers 40-hour talk time and 500-hour standby time
Configurable push-to-talk button
HD audio on the speakerphone, handset, and headset jack



DP720 - 350m Range DECT Cordless IP Phone

10 SIP accounts, 10 lines
3-way voice conferencing
Supports a range of up to 350 meters outdoors and 50 meters indoors
Supported by DP752 and DP750 base stations
1.8 inch (128x160) color TFT LCD display
Offers 40-hour talk time and 500-hour standby time
HD audio on the speakerphone, handset, and headset jack

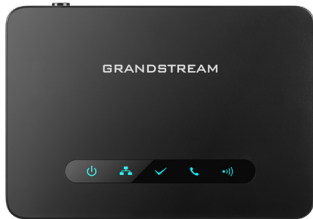


DECT Base Stations



DP752 - Long-Range DECT VoIP Base Station

Up to 10 SIP accounts per system; up to 10 lines per handset
Pairs with up to 5 of Grandstream's DP series DECT handsets via instant pairing
Outdoor range of up to 400 meters with the DP730
Outdoor range up to 350 meters with DP722/DP720
Indoor range up to 50 meters
Supports handset Push-to-Talk
Supports activity based on proximity and accelerometer sensors
Offers multiple ring group options including: circular, linear, parallel and shared
Automated provisioning options include TR-069 and XML config files



DP750 - Long-Range DECT VoIP Base Station

Up to 10 SIP accounts per system; up to 10 lines per handset
Pairs with up to 5 of Grandstream's DP series DECT handsets via instant pairing
Outdoor range of up to 300 meters
Indoor range up to 50 meters
Supports handset Push-to-Talk
Supports activity based on proximity and accelerometer sensors
Offers multiple ring group options including: circular, linear, parallel and DID
Automated provisioning options include TR-069 and XML config files



DP760 - Long-Range Wideband DECT Repeater

Up to 2 concurrent HD calls
Extends an additional range of 300m outdoors and 50m indoors
Automatic or manual association to DP750/DP752 base stations for easy use
Plug-n-Play features like auto association, auto region detection
Seamless call handover
Automated provisioning options include XML config files
Integrated PoE



UCM Series IP PBXs



A powerful yet easy to manage voice, video, data, and mobility communications platform has never been more achievable than with Grandstream's Series of UCM IP PBXs. The UCM Series offers an extensive set of unified communication features in an easy-to-manage on-premise solution with no licensing fees, upgrade fees or costs per feature. Our UCMs range from small and medium business deployments to small and medium enterprise solutions.

Common Deployments



SMB



Hospitality



Enterprise




Call Centers

Powerful Unified Communication and Collaboration Solutions that Scale

Key Features

3000 users
Supports 500 -3000 users

zero CONFIG
Auto-discovery & Zero config provisioning


Advanced, customizable voice & call routing


Supports any SIP video device & service


Enterprise-grade data tools including reports, CDR, and more

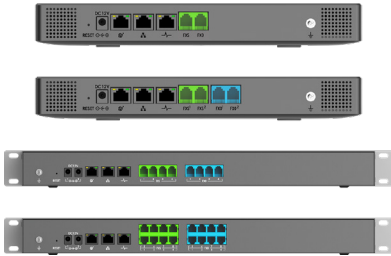

A variety of mobility options allow users to be reached anywhere



With the UCM Series, businesses can build state-of-the-art voice, video, data and mobility solutions that can easily be scaled. The Series offers models that support up to 3000 users, and multiple UCMs can be peered together to increase capacity. Users get access to thousands of features, which are always being expanded.

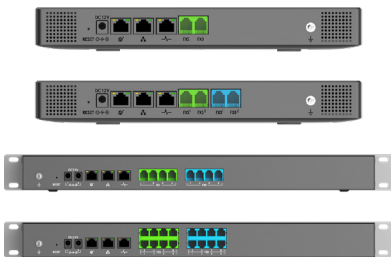


UCM6300 Series - IP PBXs for up to 3000 Users



Supports up to 3000 users and up to 450 concurrent calls
Zero configuration provisioning of Grandstream SIP endpoints
Built-in conferencing & meetings platform for desktop, Wave, and SIP endpoints
Wave App allows communication with all UCM6300 users & solutions
API available for third-party integrations, including CRM and PMS platforms
Automated NAT firewall traversal service with UCM RemoteConnect
Compatible with GDMS for cloud setup, management, and monitoring
Based on Asterisk* version 16

UCM6300A Series - Audio Focused IP PBXs



Supports up to 1500 users and up to 200 concurrent calls
Zero configuration provisioning of Grandstream SIP endpoints
Built-in Instant Messaging (IM), Audio Conferencing & Web Meetings platform
Wave App allows easy voice & IM communications for web, desktop, and mobile
API available for third-party integrations, including CRM and PMS platforms
Automated NAT firewall traversal service with UCM RemoteConnect
Compatible with GDMS for cloud setup, management, and monitoring
Based on Asterisk* version 16

UCM6510 - IP PBX for up to 2000 Users



Supports up to 2000 users, 200 concurrent calls and 64 conference attendees
1GHz quad-core Cortex A9 processor
1GB DDR3 Ram, 32GB Flash
Integrated T1/E1/J1 interface
2 PSTN trunk FXO ports
2 analog telephone/Fax FXS ports with lifeline capability
Security protection using SRTP, TLS and HTTPS encryption
Auto Discovery and Zero Configuration of Grandstream SIP endpoints

HA100 - Failover solution for the UCM6510 IP PBX



Connects and constantly monitors two UCM6510 together for high availability
Smart failover solution that automatically switches to a hot-standby secondary UCM6510 if the primary one fails
Up to 14 LED indicators showing real-time status of all of the telecom lines, net work links, auxiliary devices, etc
Gratuitous ARP forces SIP endpoints to refresh the MAC address of the new UCM6510 without interruptions
Fast 10 to 50 second system switching time depending on the number of registered endpoints



The UCM6300 Ecosystem is a solution bundle that elevates the UCM6300 series IP PBXs to easily and securely reach outside of the on-site network to support remote workers. First, UCM RemoteConnect is a cloud-based service to enable secure remote access and device management to businesses using the UCM6300 series. It provides zero-touch NAT firewall traversal for remote users and devices while offering IT professionals a secure tool to easily manage the UCM6300 series, registered endpoints, and remote users. Next, the Wave provides a powerful voice and video collaboration platform for remote users within a UCM6300 series IP PBX, available on desktop and mobile. Together, the UCM6300 series, UCM RemoteConnect, and Wave provide any organization with a powerful, easy-to-manage, and flexible communication and collaboration solution.

UCM RemoteConnect - NAT Firewall Traversal



- Cloud-based NAT firewall traversal service; runs on AWS
- Productive meetings, calls, and conferences with the included Wave app
- Offers secure connections with remote SIP endpoints registered to a UCM6300 IP PBX
- Provides built-in tools for IT-friendly secure management of remote devices
- Integrated with GDMS for centralized management of remote devices
- Built-in advanced system and device monitoring & diagnosis tools
- Provides advanced system and device reports and real-time email alerts
- Free plans available; offers cloud storage, reports, alerts, & more

Wave App - Mobile and Web Collaboration App



- Supports Android & iOS devices; Chrome and Firefox browsers
- Remotely join meetings, calls, and conferences
- Compatible with Wi-Fi and 2G/3G/4G networks
- Allows UCM6300 series users to call other extensions, landlines, and mobile numbers
- Schedule and start meetings from the app
- Supports PC and mobile built-in cameras & USB webcams
- Supports video resolutions up to 1080p HD
- Supports use with Bluetooth, USB, and other headsets
- Compatible with UCM RemoteConnect cloud service for secure remote connections



Video & Audio Conferencing Solutions



Grandstream has everything that any business needs to create a powerful yet affordable video & audio conferencing solution. The GVC Series of Video Conferencing devices and GAC Conferencing Phone empower any business with a robust and affordable Android-based collaboration environment that offers platform flexibility. If you are looking to build a solution, our IPVideoTalk cloud platform and IPVT10 on-premise server provide competitive and easy-to-deploy options.

Common Deployments



Key Features



All conferencing endpoints run Android



Sharp video quality up to 4k resolutions



Advanced cameras offer 90 degree FOV and PTZ



Various options for screen sharing, including Miracast



Built-in Wi-Fi for easy conferencing on most devices



IPVideoTalk offers room and web conferencing options

Truly Flexible Conferencing Solutions



The GVC Series supports a wide variety of video conferencing formats and platforms, offering the flexibility for businesses to pick and change their platform at any point. It can support any SIP and H.323 conferencing solution, including our IPVideoTalk cloud service, while also allowing users to conference using any Android app. We also offer an on-premise collaboration server, IPVT10, for businesses who would prefer a local platform that they can fully control.



GVC3220 - Ultra HD Multimedia Conferencing System



Runs on Android 9.0 operating system
GMD1208 desktop wireless microphone provides full room coverage for up to 5m
Remote video screen real-time control and sharing PC screen functions
Advanced camera with 8M pixel CMOS sensor, FOV wide angle lens, 12x zoom
Integrated dual-band Wi-Fi 802.11 a/b/g/n/ac (2.4GHz & 5GHz)
5-way 1080p or 9-way 720p
1x HDMI in, 2x HDMI out, 1x line in/out, 1x media
Supports sharp video quality of up to 4K full-HD video output

GVC3212 - IPVideoTalk HD Conferencing Device



Advanced camera with megapixel CMOS sensor, 60 FOV wide-angle lens
Runs on Grandstream's IPVideoTalk Meetings Platform
Integrated dual-band Wi-Fi 802.11 a/b/g/n/ac
Dual-microphones with 3-meter pickup distance
Advanced acoustic echo cancellation Noise Shield technology
Built-on adjustable stand for TV-top mounting
Support for Miracast wireless content sharing
Integrated 1x HDMI and 2x USB ports

GVC3210 - Video Conferencing Endpoint



Experience sharp video quality of up to 4k resolution
Runs on Android 6.x operating system
Built-in Bluetooth
Integrated dual band Wi-Fi
Built in 4-MIC array with beam-forming
Advanced camera with 16M pixel CMOS sensor, wide angle lens and ePTZ
Support for Miracast wireless content sharing to share a presentation
Integrated 1x HDMI in, 2x HDMI out, and 2x USB

GMD1208 - Desktop Wireless Microphone



Capacitive touch mute button with LED
1500mA built-in Li-Ion battery
Micro-B port for charging. BYOD microphone and upgrading
Low power indicator
Bluetooth v2.1+EDR protocols
Proprietary 2.4GHz wireless technology with dynamic beamforming technology
Ultrasound pairing technology
High quality audio coding with error tolerance
Built-in 8 omni-directional MEMS with 5-meter pickup range



GAC2570 - Enterprise Conferencing Phone



Full-duplex speakerphone with HD acoustic chamber & advanced echo cancellation
10-watt high-fidelity speaker
12 omnidirectional microphones with MMAD (Multichannel Microphone Array Design)
Runs on Android 10
Built-in Bluetooth 5.0
Integrated dual-band Wi-Fi 6
Supports 5m pickup range
Can be paired with two GMD1208 desktop wireless microphones up to 20m range
Supports 12 party conferencing

GAC2500 - Audio Conferencing Phone



HD audio to maximize audio quality
Runs on Android 4.4
Built-in Bluetooth
Integrated Wi-Fi support
3 cardioid microphones with 12ft. pickup distance
4.3 inch (800x480) capacitive touch screen
Supports 6 SIP accounts and 7-way voice conferencing
3.5mm audio port, USB Micro-B, RJ48 daisy chain port

IPVideoTalk Meetings - Conferencing Platform



Subscription-based cloud platform compatible with all GVC Series devices
Supports web and room-based conferencing along with webinars
1080p HD video resolutions
HD Audio quality
Screen sharing to show presentations, documents, videos, websites and more
1-click meetings with no client downloads
Advanced meeting controls, reports and analytics
Chat feature allowing attendees to communicate through typed chat
Attend meetings on any PC, Mac, iOS and Android device
Visit ipvideotalk.com for more information and to sign up



GDS Series Facility Access Solutions



The GDS Series of Facility Access Systems tracks and manages access to any physical building and provides a dedicated audio and/or video intercom. Thanks to its integration with other Grandstream endpoints, the GDS Series offers a complete end-to-end solution for access control, video/audio intercom, and security needs.

Common Deployments



SMB



Enterprise



Education



Warehouses

Key Features



GDS3710 and GDS3712 offers 1080p HD resolution



RFID chip reader for keyless entry



IP66 weatherproof casing



Built-in HD Speaker loudspeakers



HD mics with acoustic echo cancellation (AEC)



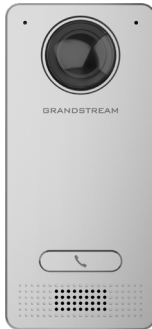
Make SIP calls to IP voice & video phones

Track, Manage & Record with GDS Manager; Control with IP Phones



By combining the GDS Series with our free GDS Manager software and Grandstream IP voice and video phones, businesses can create an integrated facility access and security solution. GDS Manager offers a centralized management and tracking platform, while Grandstream endpoints enable permitted users to have intercom conversations and open doors with any GDS device, right from their desktop phone.

Facility Access Devices



GDS3712 - HD IP Video Intercom System

Video resolutions up to 1080p
 2 Relay for electric lock and alarm out, 2 alarm in button for exit door and sensor
 SIP video streaming to NVRs, video intercom stations, IP phones, or smart phones
 Built with a metal casing to make it weatherproof and vandal resistant
 Built-in hemispheric camera allows for 180-degree wall-to wall coverage
 Supports motion detection
 Integrated PoE to power the device and provide a network connection
 Built-in microphone and speaker offers voice options and intercom functionality
 ONVIF Profile S compliant



GDS3710 - HD IP Video Door System

Video resolutions up to 1080p
 Built-in RFID chip reader for keyless entry
 SIP video streaming to NVRs, video intercom stations, IP phones, or smart phones
 Built with a metal casing to make it weatherproof and vandal resistant
 Built-in hemispheric camera allows for 180-degree wall-to wall coverage
 Supports motion detection
 Integrated PoE to power the device and provide a network connection
 Built-in microphone and speaker offers voice options and intercom functionality
 ONVIF Profile S compliant



GDS3705 - IP Audio Door System

HD audio options with up to 1.5m of audio input and 3m of audio output
 Built-in RFID chip reader for keyless entry
 Supports SIP calls to IP phones to facilitate communication
 Built with a metal casing to make it weatherproof and vandal resistant
 Integrated PoE to power the device and provide a network connection
 Built-in dual microphone and HD loudspeaker with advanced AEC
 ONVIF Profile S compliant



GDS3702 - HD Audio IP Intercom System

HD audio options with up to 1.5m of audio input and 3m of audio output
 Supports SIP calls to IP phones to facilitate communication
 Built with a metal casing to make it weatherproof and vandal resistant
 Integrated PoE to power the device and provide a network connection
 Built-in microphone and HD loudspeaker with advanced AEC
 ONVIF Profile S compliant

Facility Access Management Software



GDS Manager - Free Management Software

Free Windows-based management software for GDS3710 and GDS3705
View real-time and recorded audio/video from the GDS3710/3705
Door access management
RFID card management
Attendance reports, analytics, and more
Features client/server architecture
Download at grandstream.com/support/tools



Facility Management & Security Solutions



Grandstream offers a variety of products that allow businesses to easily manage their facility while also keeping it safe and secure. The GSC series includes SIP intercom and paging solutions, IP cameras, and a touch-screen facility control station. Ideal for office buildings, enterprises, schools, healthcare facilities, retail centers, residential settings, warehouses and similar environments, our solutions allows businesses to build easy-to-manage management and security platforms that can be integrated with IP phones to expand communication.

Common Deployments



Key Features



Intercom & PA devices feature full-duplex HD speakers



Built-in directional mics



Multiple models support dual-band Wi-Fi



A variety of inputs & outputs to integrate third party devices



Cameras offer 1080p HD video resolution

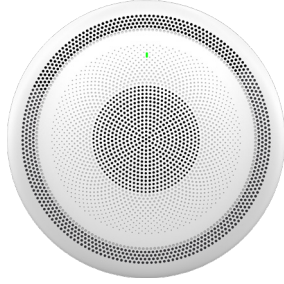


10/100 Mbps ports with PoE

Add Intercom, PA & Video Security to Any VoIP Solution



The GSC3516, GSC3510, GSC3506 and the GSC3505 allow businesses to add intercom and/or public address functionality to any VoIP network, while the GSC3620, GSC3615 and GSC3610 add video surveillance to any VoIP solution. These devices are added to a network as SIP extensions. Meanwhile, the GSC3570 adds a dedicated station to manage intercom, paging, facility access, surveillance cameras and more.



GSC3516 - SIP/Multicast Talk-Back Speaker

Full-band and wide-band audio codec support including Opus & G.722
High-fidelity 15W HD Speaker
Integrated dual-band 802.11 a/b/g/n/ac WiFi and Bluetooth
One 10/100Mbps network port with PoE/ PoE+
Full-duplex speakerphone with HD acoustic chamber, advanced acoustic echo cancellation
3 directional mics with MMAD & microphone beamforming array and 1 omnidirectional auxiliary microphone
2-pin multi-purpose input to support peripherals including call buttons



GSC3506 - SIP/Multicast Intercom Speaker

1-way public address SIP speaker
Full-band and wide-band audio codec support including Opus & G.722
High-fidelity 30W HD Speaker
One 10/100Mbps network port with PoE/ PoE+
Full-duplex speaker with HD acoustic chamber
Features SIP paging, multicast paging, call-waiting with priority override
2-pin multi-purpose input to support peripherals including call buttons



GSC3510 & GSC3505 - SIP Intercom & PA Speakers

GSC3510: SIP Intercom Speaker and Microphone
GSC3505: 1-Way Public Address SIP Speaker
Full-band and wide-band audio codec support including Opus & G.722
Integrated dual-band 802.11 a/b/g/n WiFi and Bluetooth
One 10/100Mbps network port with PoE/ PoE+
Full-duplex speakerphone with HD acoustic chamber (GSC3510)
3 directional mics with MMAD & microphone beamforming array (GSC3510)
2-pin multi-purpose input to support peripherals including call buttons (GSC3510)



GSC3570 - HD Intercom & Facility Control Station

Dedicated device for managing door access, intercom, paging, security and more
7 inch 1024x600 touch screen
Dual-band 802.11ac Wi-Fi, supports 4 SIP accounts
4 alarm input ports and 1 alarm output port for customized deployments
Full duplex 2-way HD audio with advanced echo cancellation
Secure booth & data, TLS and SRTP encryption technology
Wall mountable or place on a desktop, Integrated PoE

GSC3620 - Infrared Weatherproof Dome IP Camera



Supports motion detection
Smart infrared technology for optimal white balance and exposure
Built-in PoE to power the device and provide a network connection
Varifocal and auto-focus lens for an adjustable field of view
Supports alert notifications via outbound voice or video call & email screenshot
IP67-level weatherproof capability
Primary stream and Secondary stream
SIP/VoIP support for video and audio streaming to endpoints (external mic needed)

GSC3615 - Infrared Weatherproof IP Camera



Fixed 3.6mm lens, wall-mountable
Smart infrared technology for optimal white balance and exposure
IP66 weatherproof capability
1080p HD resolution, H.264/H.265/JPEG/MJPEG video compression
One 10/100 Mbps ports, Integrated PoE
Supports alert notifications via outbound voice/video call and email screenshot

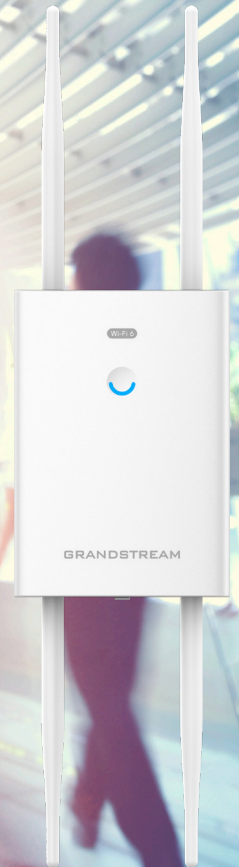
GSC3610 - Infrared Weatherproof IP Dome Camera



Fixed 3.6mm lens, dome camera
Smart infrared technology for optimal white balance and exposure
IP66 weatherproof capability
1080p HD resolution, H.264/H.265/JPEG/MJPEG video compression
One 10/100 Mbps ports, Integrated PoE
Supports alert notifications via outbound voice/video call and email screenshot



GWN Series Networking Solutions



The GWN Series of Networking Solutions allow businesses to build powerful and secure Wi-Fi networks with wide coverage range and industry-leading security features. They are supported by a variety of free management tools, including built-in controllers, our GWN.Cloud platform and GWN Manager software. All GWN Series products offer an industry-leading 3-Year Warranty.

Common Deployments



Key Features



Dual-band MU-MIMO maximizes speeds



Embedded controller built-in to all APs (aside from GWN7602)



Secure boot, critical data lockdown, unique security certificates, etc.



Gigabit ports support speeds from 1.27 - 3.55 Gbps (based on model)



Ensure real-time performance of critical apps



Free and unlimited cloud management with GWN.Cloud

Powerful Wi-Fi Networks and Free Management Options



Not only do we provide a portfolio of enterprise-grade Wi-Fi APs, Managed network switches and routers, but we also offer a range of free management tools. Most GWN Series APs uniquely include an embedded controller in their web UI, GWN.Cloud offers a free cloud platform that supports unlimited devices, and GWN.Manager provides a free software Wi-Fi management platform.



Wi-Fi Access Points



GWN7664 - 802.11ax Wi-Fi 6 Access Point

Wi-Fi 6
Dual-band 4x4:4 MU-MIMO with DL/UL OFDMA technology
Support 750 concurrent Wi-Fi client devices
3.55Gbps aggregate wireless throughput, 3.5Gbps aggregate wired throughput
Up to 175-meter coverage range
Advanced QoS to ensure real-time performance of low-latency applications
Anti-hacking secure boot and critical data/control lockdown
Embedded controller, GWN.Cloud, and GWN Manager to manage APs
Self power adaptation upon auto-detection of PoE or PoE+



GWN7664LR - High Performance Outdoor Long Range Wi-Fi 6 Access Point

Wi-Fi 6
Up to 300-meter coverage range
Supports 750+ concurrent Wi-Fi client devices
Dual-band 4x4:4 MU- MIMO with DL/UL OFDMA technology
3.55Gbps aggregate wireless throughput and 2x Gigabit Ethernet ports
4 detachable/ changeable antennas for different application scenarios
Self-power adaptation upon auto detection of PoE or PoE+
Advanced QoS to ensure real-time performance of low-latency applications
Anti-hacking secure boot and critical data
Embedded controller, GWN.Cloud, and GWN Manager to manage APs
IP66-level weatherproof capability when installed vertically



GWN7660 - 802.11ax Wi-Fi 6 Access Point

Wi-Fi 6
Dual-band 2x2:2 MU-MIMO with DL/UL OFDMA technology
1.77Gbps aggregate wireless throughput and 2x Gigabit Ethernet ports
Up to 175-meter coverage range
Supports 256 concurrent Wi-Fi client devices
Advanced QoS to ensure real-time performance of low-latency applications
Anti-hacking secure boot and critical data
Embedded controller, GWN.Cloud, and GWN Manager to manage APs
Self power adaptation upon auto-detection of PoE or PoE+



GWN7660LR - Outdoor Long Range Wi-Fi 6 Access Point

Wi-Fi 6
Up to 250-meter coverage range
Supports 256+ concurrent Wi-Fi client devices
Dual-band 2x2:2 MU- MIMO with DL/UL OFDMA technology
1.77Gbps aggregate wireless throughput and 2x Gigabit Ethernet ports
2 detachable/ changeable antennas for different application scenarios
Self-power adaptation upon auto detection of PoE or PoE+
Advanced QoS to ensure real-time performance of low-latency applications
Anti-hacking secure boot and critical data
Embedded controller, GWN.Cloud, and GWN Manager to manage APs
IP66-level weatherproof capability when installed vertically



GWN7630 - High-Performance Wi-Fi Access Point

Up to 175-meter coverage range
Supports 200+ concurrent Wi-Fi client devices
Dual-band 4x4:4 MU-MIMO technology
2.33 Gbps wireless throughput and 2x Gigabit wireline ports
Self power adaptation upon auto detection of PoE or PoE+
Advanced QoS to ensure real-time performance of low-latency applications
Anti-hacking secure boot and critical data
Embedded controller, GWN.Cloud, and GWN Manager to manage APs



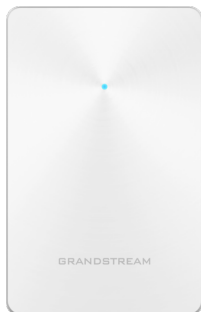
GWN7630LR - Outdoor Long Range Wi-Fi Access Point

Up to 300-meter coverage range
Supports 200+ concurrent Wi-Fi client devices
Dual-band 4x4:4 MU-MIMO technology
2.33 Gbps wireless throughput and 2x Gigabit wireline ports
4 detachable external antennas
Self power adaptation upon auto detection of PoE or PoE+
Advanced QoS to ensure real-time performance of low-latency applications
Anti-hacking secure boot and critical data
Embedded controller, GWN.Cloud, and GWN Manager to manage APs
IP66-level weatherproof capability when installed vertically



GWN7625 - Indoor Wi-Fi Access Point

Up to 165-meter coverage range
Supports 200+ concurrent Wi-Fi client devices
4x4:4 MU-MIMO technology (5Ghz) & 2x2:2 MU-MIMO technology (2.4Ghz)
2.03 Gbps wireless throughput and 2x Gigabit wireline ports
Self power adaptation upon auto detection of PoE or PoE+
Advanced QoS to ensure real-time performance of low-latency applications
Anti-hacking secure boot and critical data
Embedded controller, GWN.Cloud, and GWN Manager to manage APs



GWN7624 - Indoor Wi-Fi Access Point

Up to 100-meter coverage range
Supports 200+ concurrent Wi-Fi client devices
4x4:4 MU-MIMO technology (5Ghz) & 2x2:2 MU-MIMO technology (2.4Ghz)
2.03 Gbps wireless throughput and 4x Gigabit wireline ports
Self power adaptation upon auto detection of PoE or PoE+
Advanced QoS to ensure real-time performance of low-latency applications
Anti-hacking secure boot and critical data
Embedded controller, GWN.Cloud, and GWN Manager to manage APs



GWN7615 - Enterprise Wi-Fi Access Point

Up to 175-meter coverage range
Supports 200+ concurrent Wi-Fi client devices
Dual-band 3x3:3 MIMO technology
1.75 Gbps wireless throughput and 2x Gigabit wireline ports
Self power adaptation upon auto detection of PoE or PoE+
Advanced QoS to ensure real-time performance of low-latency applications
Anti-hacking secure boot and critical data
Embedded controller, GWN.Cloud, and GWN Manager to manage APs



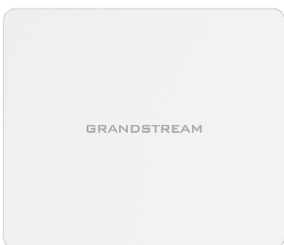
GWN7605 - Mid-Tier Wi-Fi Access Point

Up to 165-meter coverage range
Supports 100+ concurrent Wi-Fi client devices
Dual-band 2x2:2 MU-MIMO technology
1.27 Gbps wireless throughput and 2x Gigabit wireline ports
Support 802.3af Power-over-Ethernet (PoE)
Advanced QoS to ensure real-time performance of low-latency applications
Anti-hacking secure boot and critical data
Embedded controller, GWN.Cloud, and GWN Manager to manage APs



GWN7605LR - Outdoor Long-Range Wi-Fi Access Point

1.27Gbps aggregate wireless throughput and 2x Gigabit wireline ports
Dual-band 2x2:2 MU-MIMO with beam-forming technology
Self power adaptation upon auto-detection of PoE or PoE+
Supports 100+ concurrent Wi-Fi client devices
Up to 250-meter coverage range
Advanced QoS to ensure real-time performance of low-latency applications
Anti-hacking secure boot and critical data/control lockdown



GWN7602 - Wi-Fi AP with Integrated Ethernet Switch

Up to 100-meter coverage range
Supports 80+ concurrent Wi-Fi client devices
Dual-band 2x2:2 MIMO technology
1.17 Gbps wireless throughput, 1x Gigabit and 3x 100Mbit wireline speed
Self power adaptation upon auto detection of PoE/PoE+ and PSE
Advanced QoS to ensure real-time performance of low-latency applications
Anti-hacking secure boot and critical data
GWN.Cloud and GWN Manager to manage APs



Routers



GWN7052/GWN7052F - Dual-Band Wi-Fi Router

1.27Gbps aggregate wireless throughput with 5x auto-sensing Gigabit ports
Dual-band 2x2:2 MU-MIMO
Built in VPN Support
Supports 100+ concurrent Wi-Fi client devices
Supports mesh networking with Grandstream APs
Anti-hacking secure boot and critical data
Secure cloud provisioning with GWN.Cloud
Rich firewall features including Anti-DoS, traffic rules, NAT and ALG



GWN7062 - Wi-Fi 6 Dual-Band Router

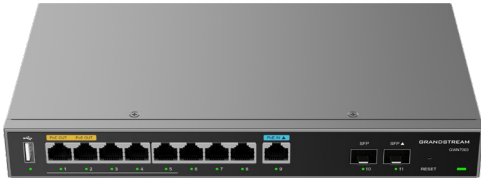
Wi-Fi 6
1.77Gbps aggregate wireless throughput with 5x auto-sensing Gigabit ports
Dual-band 2x2:2 MU-MIMO
Built in VPN Support
Supports 256+ concurrent Wi-Fi client devices
Supports mesh networking with Grandstream APs
Anti-hacking secure boot and critical data
Secure cloud provisioning with GWN.Cloud
Rich firewall features including Anti-DoS, traffic rules, NAT and ALG



GWN7002 - Multi-WAN Gigabit VPN Router

2.2Gbps NAT throughput and 600Mbps IPsec VPN throughput
1x Gigabit port with IEEE 802.3af/at PoE Input and 2x Gigabit ports with 48V Passive PoE output or IEEE802.3af
2 x Gigabit SFP ports and 4 x Gigabit Ethernet ports
Multiple WAN ports with load balancing and failover
Built in VPN Support
50 concurrent VPN tunnels
256MB RAM, 256MB Flash, 30K NAT sessions
Advanced QoS to ensure real-time performance of low-latency applications
Secure cloud provisioning with GWN.Cloud
Rich firewall features including DDNS, port forwarding, DMZ, UPnP, Anti-Dos, traffic rules, NAT and ALG
Embedded controller can manage itself and up to 150 GWN Series APs

GWN7003 - Multi-WAN Gigabit VPN Router



2.2Gbps NAT throughput and 600Mbps IPsec VPN throughput
 1x Gigabit port with IEEE 802.3af/at PoE Input and 2x Gigabit ports with 48V Passive PoE output or IEEE802.3af
 2 x Gigabit SFP ports and 9 x Gigabit Ethernet ports
 Multiple WAN ports with load balancing and failover
 Built in VPN Support
 100 concurrent VPN tunnels
 512MB RAM, 256MB Flash, 60K NAT sessions
 Advanced QoS to ensure real-time performance of low-latency applications
 Secure cloud provisioning with GWN.Cloud
 Rich firewall features including DDNS, port forwarding, DMZ, UPnP, Anti-Dos, traffic rules, NAT and ALG
 Embedded controller can manage itself and up to 150 GWN Series APs

Switches

GWN7800 Series - Layer 2+ Managed Switch



8/16/24 Gigabit Ethernet Ports and 2/4 Gigabit SFP Ports
 Advanced VLAN for traffic segmentation
 Smart power control to support dynamic PoE/PoE+ power allocation per port for the PoE models
 Built-in QoS allows for prioritization of network traffic
 Embedded controller to manage switch
 Also manageable via GWN.Cloud and GWN Manager, Grandstream's cloud and on-premise Wi-Fi management platform
 Security features include ARP inspection, IP Source Guard, DoS protection, port security and DHCP snooping

Network Management



GWN.Cloud and GWN Manager

Free Cloud platform: GWN.Cloud (visit gwn.cloud)
 Free software: GWN Manager
 Complete scalability with no limits on the number of AP, sites, or groups
 Access either platform via the web user interface or mobile app for iOS and Android
 Comprehensive network monitoring and reporting, captive portals and more
 High reliability (GWN.Cloud hosted by Amazon Web Services (AWS))
 Bank-grade TLS encryption from end-to-end
 X.509 certificate-based authentication



HT Series Analog Telephone Adapters



Making integrated IP solutions easy and manageable, the HT Series of Analog Telephone Adapters are trusted and deployed by some of the largest service providers in the world. Integrate individual analog phones to a home or office environment with these simple-to-deploy solutions.

Common Deployments



SMB



Residential



Retail



Education

Key Features



TLS & SRTP encryption technology



Automated provisioning options



Gigabit

Models available with Gigabit ports



Built-in Failover SIP server



Supports T.38 fax



Advanced VoIP telephony features

Trusted by the Largest Service Providers in the World



Grandstream is the world's leading provider of ATAs. Many of the world's top service providers rely on our ATAs, which have been the industry standard for almost 15 years. This series offers a range of devices with various amounts of color-coded FXS ports, available NAT routers, voice conferencing support, and more. If you are looking to integrate analog devices with a VoIP network, the HT Series is your ideal choice.



HT818 - 8 Port FXS Gateway with Gigabit NAT Router



Supports 2 SIP profiles and 8 FXS ports and dual gigabit ports
Strong AES encryption with security certificate per unit
Automated & secure provisioning options include TR069
3-way voice conferencing per port
Exceptional voice quality with wide-band HD codec
Supports T.38 Fax for reliable Fax-over-IP
High performance NAT router

HT814 - 4 Port FXS Gateway with Gigabit NAT Router



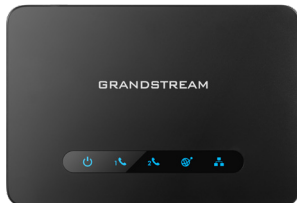
Supports 2 SIP profiles through 4 FXS ports and dual Gigabit ports
TLS and SRTP security encryption technology to protect calls and accounts
Automated provisioning options include TR-069 and XML config files
3-way voice conferencing per port
Exceptional voice quality with wide-band HD codec
Supports T.38 Fax for reliable Fax-over-IP
Includes a built-in NAT router which can handle routing speeds up to 100Mbps
Failover SIP server auto switches to second server if main server loses connection

HT813 - Hybrid ATA with FXS and FXO ports



Supports 2 SIP profiles through 1 FXS port and 1 FXO port
TLS and SRTP security encryption technology to protect calls and accounts
Automated provisioning options include TR-069
3-way voice conferencing per port
Exceptional voice quality with wide-band HD codec
Supports T.38 Fax for reliable Fax-over-IP
Includes a built-in NAT router
Failover SIP server auto switches to second server if main server loses connection
Lifeline support (FXS port will be hard-relayed to FXO port) in case of power fail

HT812 - 2 Port ATA with Gigabit NAT Router



Supports 2 SIP profiles through 2 FXS ports and dual Gigabit ports
Includes a built-in NAT router which can handle routing speeds up to 100Mbps
TLS and SRTP security encryption technology to protect calls and accounts
Automated provisioning options include TR-069 and XML config files
Supports 3-way voice conferencing
Failover SIP server auto switches to second server if main server loses connection
Supports T.38 Fax for creating Fax-over-IP

HT802 - 2 Port ATA



Supports 2 SIP profiles through 2 FXS ports and a single 10/100Mbps port
TLS and SRTP security encryption technology to protect calls and accounts
Automated provisioning options include TR-069 and XML config files
Supports 3-way voice conferencing
Failover SIP server auto switches to second server if main server loses connection
Supports T.38 Fax for creating Fax-over-IP

HT801 - 1 Port ATA



Supports 1 SIP profile through a single FXS port and a single 10/100Mbps port
TLS and SRTP security encryption technology to protect calls and accounts
Automated provisioning options include TR-069 and XML config files
Supports 3-way voice conferencing
Failover SIP server auto switches to second server if main server loses connection
Supports T.38 Fax for creating Fax-over-IP



GXW Series VoIP Gateways



The GXW VoIP Gateway Series enables businesses to integrate traditional phone systems with VoIP networks to efficiently manage communication costs and create streamlined networks. The GXW Series is designed for full interoperability with leading IP-PBXs, Softswitches and most SIP-based environments and its various models offer support for analog or digital VoIP networks.

Common Deployments



Key Features



Gigabit

Models available with Gigabit ports & NAT routers



TLS & SRTP encryption technology



Automated provisioning options



Built-in Failover SIP server



Supports T.38 fax



GXW4500 series offers E1/T1/J1 ports

Integrate Entire Analog Networks and/or Trunks with VoIP Solutions



If you need to integrate analog devices or trunks with a VoIP network, the GXW Series is for you. The GXW4100 and GXW4200 series allow businesses to extend VoIP service to entire networks of analog devices, while the GXW4500 series provides the ability to integrated digital PSTN and ISDN trunks with VoIP networks.



GXW4500 Series - Digital VoIP Gateways



Software configurable E1/T1/J1 ports, support PRI, SS7, MFC R2
Dual Gigabit auto-sensing RJ45 network ports with integrated NAT router
Supports a wide-range of voice codecs, including Opus, G.722, G.729, iLBC, etc.
TLS and SRTP security encryption technology to protect calls and accounts
Self power adaptation upon auto detection of PoE/PoE+ and PSE
Automated provisioning by HTTP/TFTP with XML config files
Supports T.38 Fax for creating Fax-over-IP
Supports multi-language voice prompts

GXW4200 Series - High-Density, Gigabit Gateways



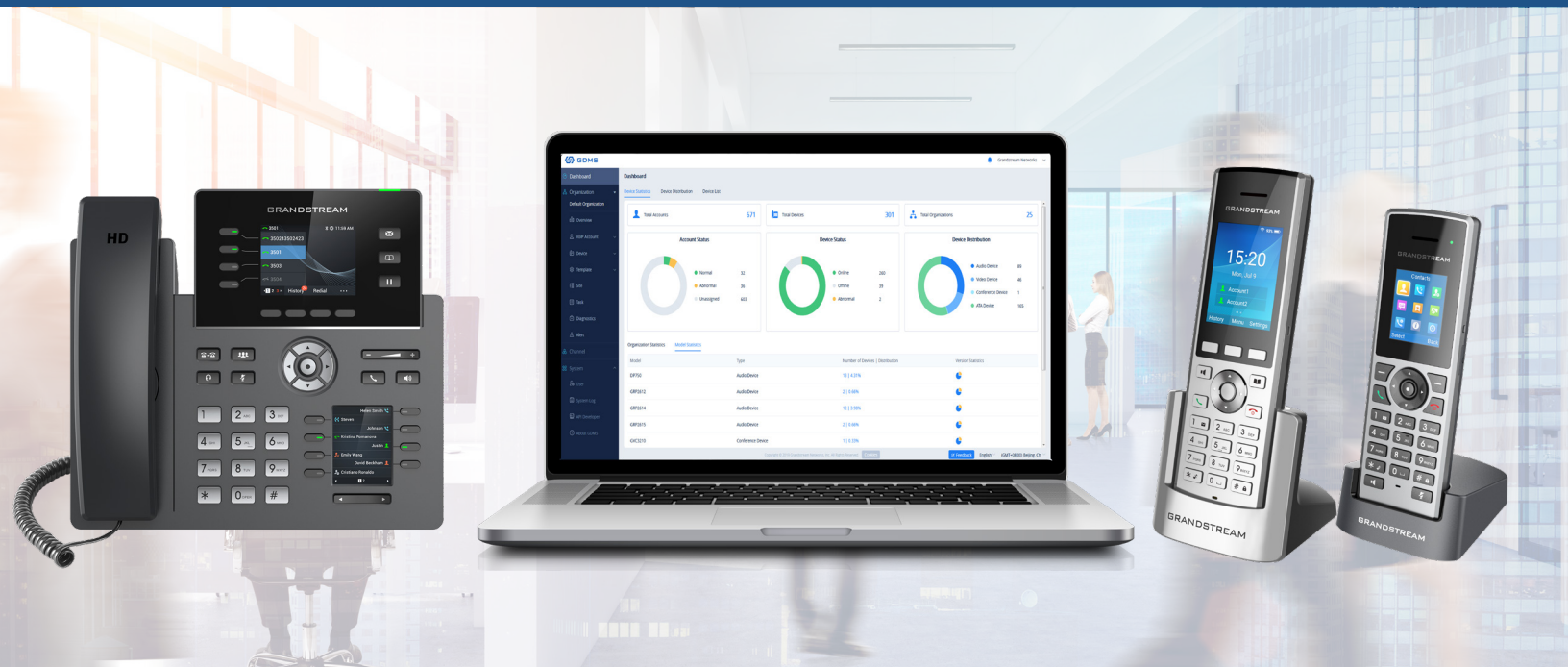
16/24/32 FXS ports, GXW4248 includes 2 50-pin Telco connectors
Dual firmware images
1 Gigabit network port
16KHz voice sampling per port
132x32 backlit graphic display with support for multiples languages
TLS and SRTP security encryption technology to protect calls and accounts
4 SIP server profiles per system, independent SIP account per port
Automated provisioning options include TR-069 and XML config files
Full interoperability with leading IP-PBXs, soft-switches & SIP-based environments
GDMS cloud provisioning

GXW4104/4108 - FXO Gateways



4/8 FXO ports
SRTP security encryption technology to protect calls and accounts
Up to 2 SIP server profiles per system and independent SIP account per port
Provisioning options include TFTP and HTTP
PSTN Failover on power failure
Supports T.38 Fax for creating Fax-over-IP
Supports a wide range of caller ID formats

Grandstream Device Management System (GDMS)



Key Features



Configuration, management & monitoring of devices, accounts & firmware



Real-time device & network monitoring; analytical system reports



Manage devices by site, group, model, etc.



TLS, 2-way certificate validation and more

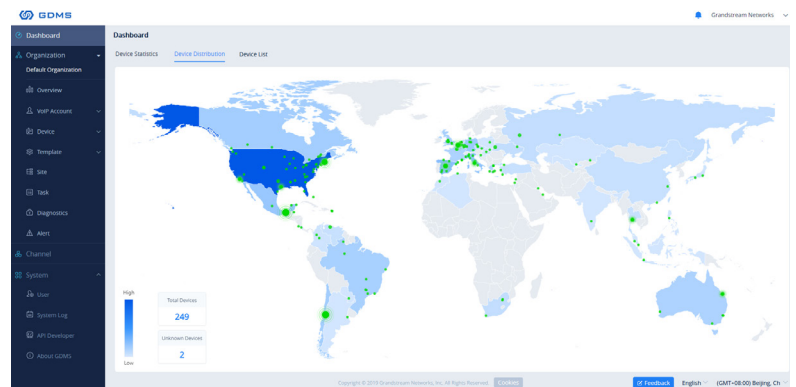


Configurable notifications, intelligent alarms & automatic troubleshooting



Intelligent troubleshooting identifies problems & provides diagnostic reports

Zero-Touch Provisioning and Management



The Grandstream Device Management System (GDMS) is a zero-touch cloud provisioning and management system that provides easy-to-use enterprise-level tools to manage Grandstream products before, during and after deployment. It provides a centralized interface to provision, manage, monitor and troubleshoot. GDMS is ideal for enterprises, service providers and multi-site businesses as it allows them to easily deploy and manage large networks of Grandstream solutions. Visit gdms.cloud to sign up.



GHP Series Compact Hotel Phones



The GHP series of Compact Hotel Phones features simple, easy-to-use IP phones for any hotel room that can be programmed and customized based on the needs of the hotel and their guests. This Series features 8 model options to fit all needs with available Wi-Fi, white and black color options, faceplates that can be customized with any hotel's logo, and more. The GHP Series is supported by Grandstream's Device Management System (GDMS), which provides a centralized cloud interface to setup, provision and manage the GHP Series.

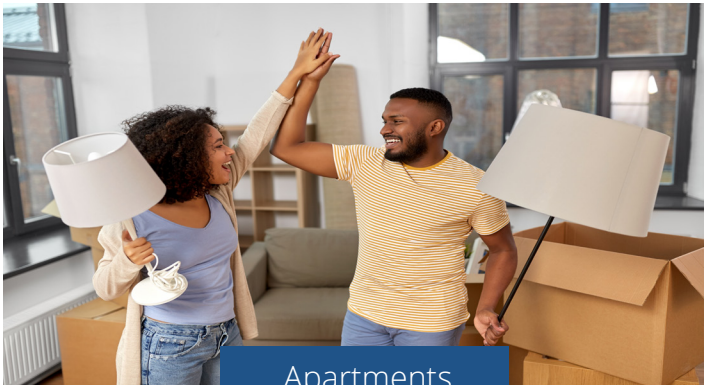
Common Deployments



Hospitality



Hospitals



Apartments



Dormitories

Key Features

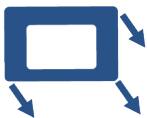


Integrated dual-band 2.4GHz & 5GHz 802.11 a/b/g/n/ac (W models only)



PoE

Includes one 100Mbps network port with PoE



Swappable faceplate to allow for easy customization



Hearing aid compatibility (HAC)



Enterprise-level protection including secure boot, dual firmware images and encrypted data storage



Grandstream Device Management System online device management and provisioning

Programmable and Customizable Compact IP Phones



The GHP Series are Compact Hotel Phones that are simple, sleek, and easy-to-use while allowing hotels to customize them based on their needs. This Series features 8 models that all support 2 lines/2 SIP accounts, 3-way audio conferencing, cloud management and high-end security features while providing an HD speakerphone. With available Wi-Fi models, black and white model options, and cloud provisioning with GDMS, the GHP Series offers the ideal model for every hotel.



GHP610/610W & GHP611/611W - Compact Hotel Phones

2 SIP Accounts, 2 Lines
3-Way Audio Conferencing
3 programmable keys and 10-speed dial keys
Hearing Aid Compatibility (HAC)
Includes one 100Mbps network port with PoE (GHP610 & GHP611 only) or power adapter (GHP610W/GHP611W)
Integrated dual-band Wi-Fi (GHP610W/GHP611W)
GDMS cloud device management and provisioning



GHP620/620W and GHP621/621W - Compact Hotel Phones

2 SIP Accounts, 2 Lines
3-Way Audio Conferencing
6 programmable keys, 10-speed dial keys and customizable face plate
Hearing Aid Compatibility (HAC)
USB type C port for charging external devices
Includes one 100Mbps network port with PoE (GHP620 & GHP621 only) or power adapter (GHP620W/GHP621W)
Integrated dual-band Wi-Fi (GHP610W/GHP611W)
GDMS cloud device management and provisioning



WWW.GRANDSTREAM.COM



@GrandstreamNetworks



Grandstream Networks



@GrandstreamNet



@GrandstreamNetworksInc

OFFICE LOCATIONS

Corporate Headquarters

126 Brookline Ave, 3rd Floor
Boston, MA 02215
Voice: +1 617-566-9300
Fax: +1 617-249-1987

Los Angeles

1208 John Reed Court
City of Industry, CA 91745
Voice: +1 626-638-9172
Fax: +1 617-249-1987

Dallas

2301 W. Plano Pkwy, Suite 208
Plano, TX 75075
Voice: +1 469-241-0100
Fax: +1 617-249-1987

CONTACT SALES

NORTH AMERICA

sales_northamerica@grandstream.com

EUROPE, MIDDLE EAST, AFRICA

sales_europe@grandstream.com

LATIN AMERICA

sales_latinamerica@grandstream.com

ASIA PACIFIC

sales_asia@grandstream.com