

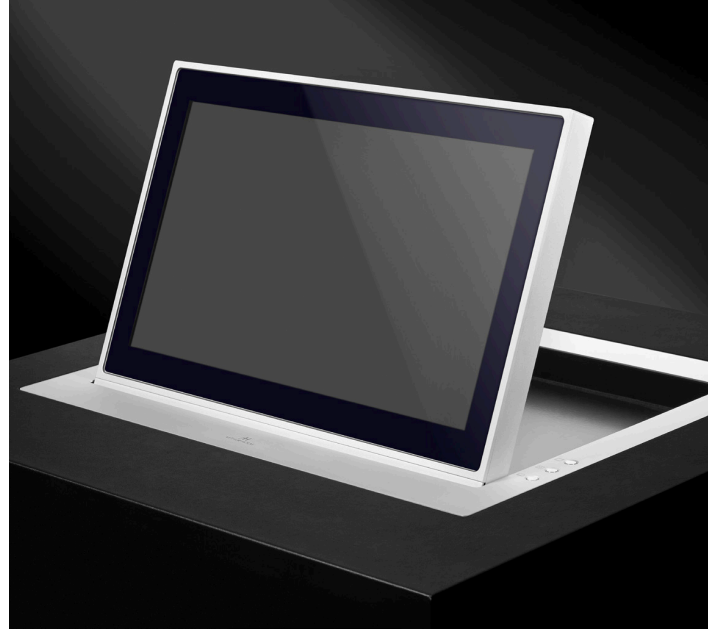
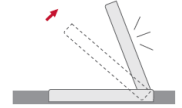


ARTHUR HOLM

AH17D1HGA

Dynamic 1H

HDCP compliant aluminium foldable motorised monitor



FEATURES

- Horizontal motorised monitor
- Rear gear
- Adjustable position from 0 to 70 °
- Position memory
- Aluminium milled monitor housing
- Cover plate in aluminium
- Low profile enclosure
- Front double sided anti-reflective 2 sides coating 3 mm black edged glass
- Interactive Setup Display (ISD)
- Maintenance free
- HDCP compliant
- Passive cooling
- Energy saving design, low consumption video controller
- Serial control and remote diagnosis
- Wireless connectivity for setup and control
- Individual monitor addressing
- Auto Mechanical Movement Calibration (AH-AMMC)

GENERAL

Arthur Holm Dynamic1H is a motorised foldable product range that provides a silent and robust lifting system with a patented dent rear gear drive. The screen is always visible; it raises and leans flush in the desk and can be stopped at any view angle position from 0 to 70 ° of inclination. A smart memory system makes it easy setting up and recalling the desired monitor's position.

Both the monitor housing and the cover plate are made of aluminium, and has under gone an anodising treatment to toughen the aluminium surface to prevent scratches. We have selected the best possible aluminium specifications in the world, to be able to provide the maximum technical and visual performance. Dynamic1H provides an elegant and timeless design and it is available from 12.1 to 21.5", with 2 DVI-HDCP compliant inputs and equipped with an Interactive Setup Display allowing the control, setup and diagnose of the monitors.

Monitors provide RS-422 I/O allowing the remote control of the movements, safety settings, brightness, contrast and backlight. The monitors are equipped with an Auto Mechanical Calibration Movement System. The use of Arthur Holm's ERT will enable the address configuration of all monitors installed by simply pressing a button on each monitor.

The AHlink app gives you wireless access to the monitor's setup menu, serial number and factory settings, making the installation and service of the monitors easy and straightforward, without having physically having to touch the monitor or that furniture. The AHlink app is available for Android and iOS.

ARTHUR HOLM

Albiral Display Solutions SL · Fàtima, 25 Sant Hipòlit de Voltregà 08512 Barcelona, Spain · +34 938 502 376 · marketing@arthurholm.com · www.arthurholm.com
Arthur Holm is a registered brand of Albiral Display Solutions SL. Specifications subject to change without previous notice.

Technology serving Design

Display

Size	FULL HD 17.3" TFT Active Matrix
Resolution	1920 (h) x 1080 (v)
Brightness	400 cd/m2
Contrast ratio	600:1
Pixel	0.1989 (h) x 0.1989 (v) mm
Viewing angle	60°/80° (u/d) / 80°/80° (l/r)
Viewing area	381.888 (h) x 214.812 (v) mm
LED backlight lifespan	50,000 hrs
Response time	Tr 37 ms, Tf 3 ms
Temperature (operating/storage)	Operating 0°C ~+40°C Storage -20°C ~+60°C

Materials

Monitor housing	Anodised Aluminium
Glass	AR 2-side with an anti-reflective coating on the glass surface. Thickness: 3.0 ± 0.3 mm
Cover plate	Anodised aluminium

Connectivity

Input signal	DVI-I (1 input) – HDCP Compliant - Digital / Analog DVI-D (1 input) – HDCP Compliant - Digital
RJ45 CAT6 (with loop)	Addressable RS422 monitor control by AHnet protocol
GPI (SubD9)	Up/Down control
USB	For service

Control

RJ45, RS-422 (I/O), AHNet protocol
Addressing
Termination switch
GPI
IR Remote control (monitor adjustments): 1/5

Movement's Control

User interface on monitor	(Up/Down) Buttons on cover plate
Remote	RS-422 I/O, GPI

Electrical

External power supply	100-240 Vac, 47/63Hz, 12Vdc
Power consumption	50W

Accessories

ERT	Ethernet Interface Unit
-----	-------------------------

Mechanical

Monitor Dimensions:	
Upper cover plate	509 x 389 mm x 3,25 mm [20.03" x 15.31" x 0.98"]
Housing below the table	495 x 371 x 76 mm [19.48" x 14.6" x 2.99"]
Weight	20 Kg / 44.09 Lbs
Shipping Dimensions:	
Weight	17.8 Kg / 39.24 Lbs
Shipping Box	559 x 469 x 222 mm [22" x 18.46" x 8.74"]

OPTIONS

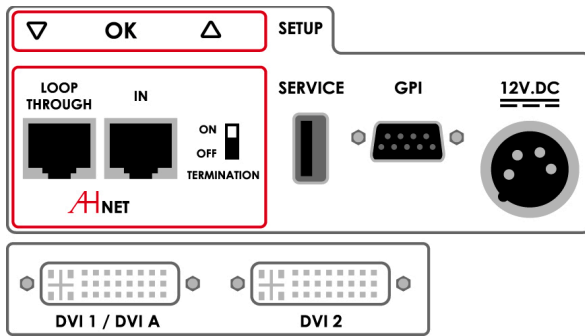
- Laser engraved logo
- Projected capacitive multi-touch screen
- Built-in camera
- DynamicTalkM
- Priority
- Connectors
- DynamicLoop
- DynamicShare
- Black anodised
- Gold finish
- Bronze finish
- Painted

CERTIFICATIONS

- CE
- FCC
- IECCE

WARRANTY

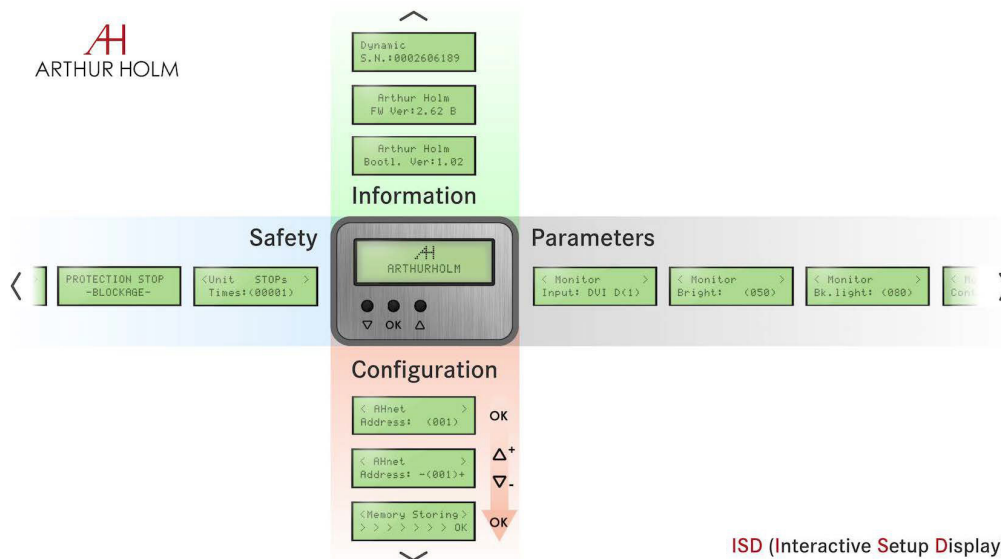
- 2 years general warranty



CONNECTIVITY

- 1- AHnet control interface
- 2- USB for Service
- 3- GPI control
- 4- Power input
- 5- DVI 1 / DVI A video input
- 6- DVI 2 video input

INTERACTIVE SETUP DISPLAY (ISD)



ISD (Interactive Setup Display)

CONSULTANTS, ARCHITECTS AND ENGINEERS SPECIFICATIONS

Horizontally foldable motorised 17.3" professional monitor. The monitor housing shall be made of milled aluminium, the cover plate shall be made of anodised aluminium and the screen shall be protected with anti-reflective 2 side coating black edged 3 mm glass. The monitor shall make the movements thanks to a rear gear dent system. The monitor shall have a brightness of 400 cd/m2, a contrast ratio of 600:1 and a backlight life span of 50,000 hours. The monitor shall provide 2 DVI/ HDCP inputs by a licensed HDCP monitor manufacturer.

The monitor shall provide an addressable RS-422 and easy to read Interactive Setup Display (ISD) to access the safety parameters and the control of the brightness, contrast and backlight. The monitor shall be able to run an autoadjustment program to reset the factory setups. The monitor shall provide a USB port for firmware upgrades. The monitor shall be controlled by a wireless Android and iOS app providing information about the monitor's serial number and providing access to the control and setup menu.

